

Society for
Endocrinology

SOCIETY FOR ENDOCRINOLOGY



WORKING TOGETHER TO ADVANCE ENDOCRINOLOGY

YEAR IN REVIEW 2012-2013

ENGAGE | SUPPORT | ADVANCE

The Society for Endocrinology is the major British society representing scientists, clinicians and nurses who work with hormones. A charity, registered in the UK, the Society has more than 2,200 members, and was set up in 1946 to promote the advancement of endocrinology in the UK and beyond.

TO BE A WORLD-LEADING AUTHORITY ON HORMONES

WITH THIS AMBITION IN MIND WE WORK TO:

- Advance scientific and clinical education and research in endocrinology for the public benefit
- Educate and inform the public on all aspects of endocrinology
- Attract good scientists, doctors and nurses into endocrinology and to retain them in the discipline, in order to improve science and medicine for the public benefit
- Raise the profile and be the voice of endocrinology in the UK
- Promote and support endocrinology worldwide and foster a sense of community, including working in collaboration with other international organisations

This review covers the period from August 2012-July 2013.

CONTENTS

4-5

Report summary

6-7

Year in review infographic

8-9

Messages from our
President and
Chief Executive

10-17

Training
Projects
Events
Public engagement

18-25

Patient care
Grants
Journals
Medals, Prizes and Awards

26-33

Timeline of achievement
Partners
Thanks

34-35

Financial report

ENGAGE

SUPPORT

ADVANCE

REPORT SUMMARY

The year 2012-13 represented the beginning of a new era for the Society in which we built on strong foundations towards our vision of becoming a world-leading authority on hormones. This year, the Society focused on listening to members, clarifying its identity and embedding its values: **engage, support, advance.**

WHAT WE DID 2012-13

Improved patient care by developing and publishing a Competency Framework for Adult Endocrine Nursing in addition to a series of Emergency Endocrine Guidance documents

Established our members' current needs and the **future direction of the Society** by seeking feedback in creative ways

Fostered **international collaborations** with the Endocrine Society of India, International Society of Endocrinology and The Endocrine Society (USA) to organise International Clinical Update 2014

Raised the voice of endocrinology by engaging with science policy-makers at Parliamentary Links Day and Voice of the Future

Clarified our identity by **distinguishing the Society** from its commercial arm, Bioscientifica

Improved our Career Development Workshops to **cater for more of our members' needs** through collaboration between the Young Endocrinologists' Steering Group and Science Committee

Endorsed *Endocrinology, Diabetes & Metabolism Case Reports* - a **new resource** to allow practitioners to share their findings to help further both medical education and clinical practice

Revamped our **Corporate Supporters' package** including free adverts in *The Endocrinologist* and free subscription to a Society journal

WHAT WE WILL DO 2013-14

Further **improve our events** and education programme based on specific feedback from our members

Establish a number of Endocrine Networks to allow our members to **raise the profile and give a voice** to diverse areas of endocrinology

Launch the first annual Journal Awards at the Society BES conference 2014. These will be awarded to **recognise research papers** of scientific excellence published in the Society's official journals

Maximise our engagement with members so they receive the most relevant information and opportunities to participate and are encouraged to feedback through a satisfaction survey as well as informally

Expand our Public Engagement programme to **engage the widest possible audience** with endocrinology and its relevance to health and everyday life

Continue to lobby and **raise the voice of endocrinology** in political arenas

Publish **Guidance on the Late Endocrine Effects of Cancer Treatment**



See pages 6 and 7 for a visual representation of our key achievements in 2012-13

The year 2012-13 represented the beginning of a new era for the Society in which we built on strong foundations towards our vision of becoming a world-leading authority on hormones. This year, the Society focused on listening to members, clarifying its identity and embedding its values: engage, support, advance.

2,215

MEMBERS WORLDWIDE

EXPANDING OUR REACH

Widening the awareness of the Society outside endocrinology

INTERNATIONAL MEMBERSHIP GROWTH

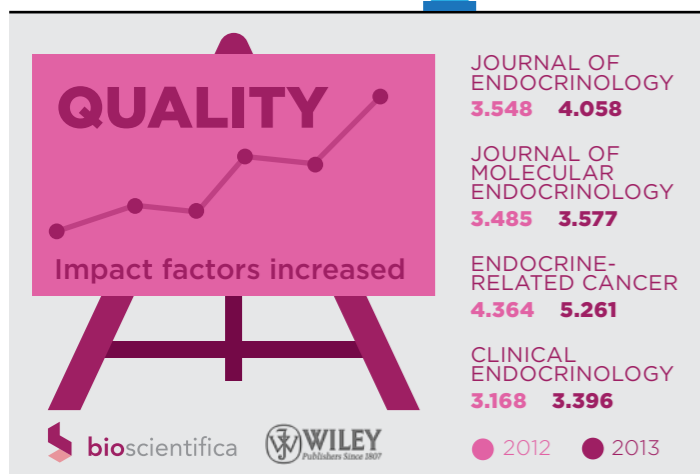
SHADING INDICATES OUR MEMBERS

PUBLIC ENGAGEMENT

Edinburgh International Science Festival

Cheltenham Science Festival

Bringing the science of hormones to diverse audiences including teachers, patients and the public

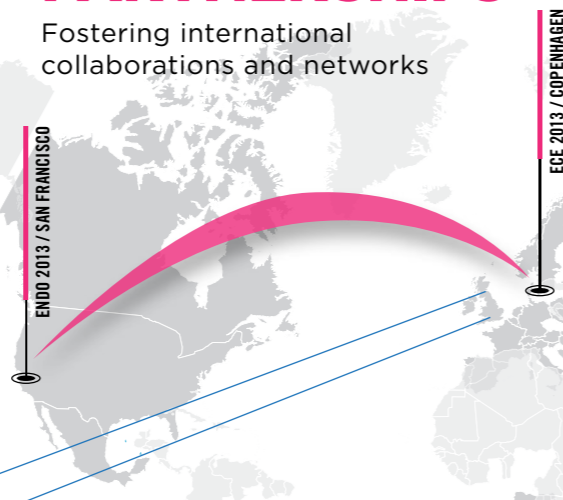


WORLD-LEADING MEMBERS



GLOBAL PARTNERSHIPS

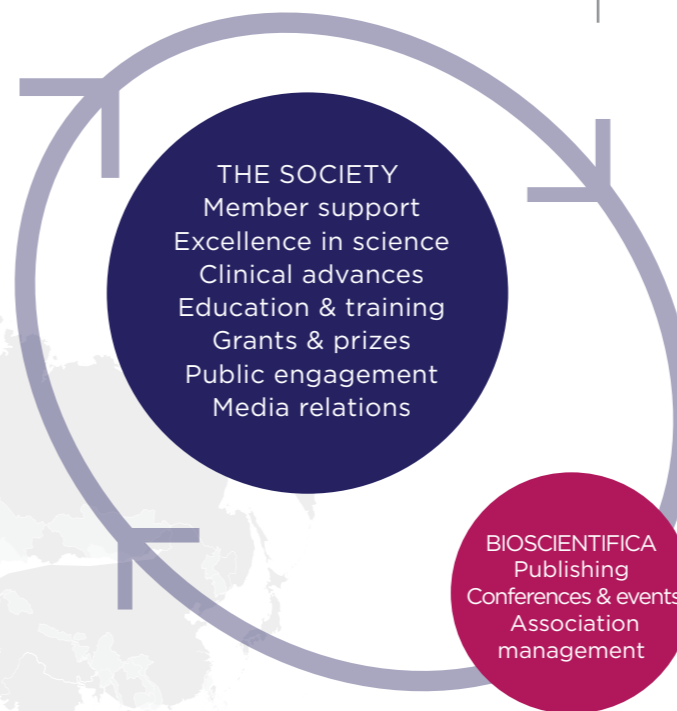
Fostering international collaborations and networks



CLARIFYING OUR IDENTITY

Distinguishing the Society from its commercial arm, Bioscientifica

A NEW ERA FOR THE SOCIETY



LISTENING TO OUR MEMBERS

- Society BES 2013 Diary Room
- Phone Interviews
- Focus Groups
- Face to Face Interviews
- Workshops
- Feedback Questionnaires

LESSONS LEARNT

- The need for a clear identity
- Clarification of what we stand for
- A better understanding of our members' needs
- Our future direction

NEW VALUES

ENGAGE | SUPPORT | ADVANCE

Strengthening links between the Society and interdisciplinary sectors allied to endocrinology



SUPPORTING OUR MEMBERS

£535,590

Grants awarded in 2012/13

£506,512

Grants awarded in 2011/12

ADVOCACY AND LOBBYING

Raising the voice of endocrinology by engaging with science policy-makers at Parliamentary Links Day



EMERGENCY GUIDANCE
Supporting patient services involving endocrinology

Q&A

VOICE OF THE FUTURE
Giving Young Endocrinologists the chance to ask policy-makers about the future of UK science at the Voice of the Future event at the House of Commons



CLINICAL PEER REVIEWS
Supporting endocrinologists and improving patient services



GAINING RECOGNITION
Strengthening our work through accreditation by the Royal College of Nursing for our Competency Framework for Adult Endocrine Nursing



Communicating with members and other audiences through new channels



www.endocrinology.org

A MESSAGE FROM OUR PRESIDENT ASHLEY GROSSMAN



I am delighted to introduce the Society for Endocrinology annual report, covering activities over the period August 2012 to July 2013.

Our Society is a diverse and active organisation – a scan of the following pages will give a snapshot of our wide range of activities over this last year. It has been my pleasure and privilege to lead the Society over the past three years, a term of office that will come to end during 2014 as I hand over to our incoming President, Professor Sir Stephen O’Rahilly.

This has been a year of implementing change and consolidating the strategy that Council approved back in January 2012, an ambitious programme that builds on our solid foundations as a leading learned society, and will take us on to meet the new challenges facing our specialty.

The excellent work that our members, all volunteers, and our staff in the Bristol office do is demonstrated throughout this review and I encourage you to read on and, I hope, be inspired to join us in our work to advance endocrinology.

Every branch of our membership has been under a period of sustained pressure this year – whether incorporating change to clinical practice or seeking research grants or tenure. What I hope will be clear from the reports included in this review is the constant effort of the Society – members and staff – to support the profession, through grants, education, guidelines, meetings and events and the support we provide to patient groups as we seek to broaden public engagement with endocrinology.

It is also important that we recognise and understand the varied sources of income we have at the Society to provide services to members and to the public and I would encourage you to review the financial report from the Treasurer included at the end of this review. The Society is in very good shape financially; however it is of course extremely important that we maintain the good financial governance and oversight provided by our Finance Committee and Council to sustain this position.

I would like to thank the Officers of the Society, David Ray (General Secretary), Graham Williams (Treasurer) and Chris McCabe (Programme Secretary), our Council of Management, Committees and volunteers who have supported our Society this year, as well as our excellent staff in the Bristol office.

Finally, we are moving forward into a new era of public engagement where we are becoming more proactive in the wider community, moving from increasing public understanding to public engagement: we feel this will not only help improve the health of the wider population, but should help our membership to improve their impact in the world community. This will clearly develop under Steve O’Rahilly’s presidency.

ASHLEY GROSSMAN
President
Society for Endocrinology

A MESSAGE FROM OUR CHIEF EXECUTIVE LEON HEWARD-MILLS



This has been a challenging and exciting year for the Society office, as we see some of the strategic initiatives introduced throughout the year begin to take shape and look to build on our strong foundations.

Our principal role is to support Council in delivering strategy whilst at the same time ensuring that members receive an excellent service. This has involved managing change within the office and looking to introduce new systems and processes to ensure that the Society remains fit to deliver its plans.

It also involves talking to members at every opportunity and I have been encouraged by the range of comment and feedback that I have received from members during the year. The Society exists through its members and it is their input that allows the Society to grow in strength and reach.

Ashley has referred already to the Society’s financial position. Although the economic forecast is improving, I remain acutely aware of the need to carefully manage the Society’s resources to ensure we continue to deliver the levels of support that have been achieved in recent years.

Fundamental to this is a need to secure our current sources of income and I am very pleased to be able to report another good year for Bioscientifica – particularly gratifying during a period of economic uncertainty. We will continue to develop the Society’s commercial subsidiary to ensure that we maintain a sound income base, whilst actively creating and disseminating products and services that will appeal to Society members and those in related disciplines.

The Society’s journals continue to thrive, with notable successes in the increase of standards across the board – increased journal impact factors and shorter publication times. We will continue to focus on developing all of the Society’s journals, ensuring that we attract and disseminate the very best in clinical and scientific research and practice.

So, an exciting and diverse range of activities indeed. I look forward to continued advances in the coming year as our Society continues to grow and develop.

LEON HEWARD-MILLS
Chief Executive
Society for Endocrinology



ENGAGE

WE ENGAGE OUR MEMBERS TO BUILD STRONG LINKS WITHIN OUR SECTOR AND THE WIDER SCIENTIFIC COMMUNITY, PATIENT GROUPS, POLICY-MAKERS AND THE PUBLIC



The Society exists through over 2,200 scientist, clinician and nurse members who work to improve patient care and advance the understanding of endocrinology and its repercussions. Through these shared goals, we move the Society towards its ultimate ambition of becoming a world-leading authority on hormones.

MEMBERS ARE THE HEART OF THE SOCIETY

SUPPORTING EACH OTHER AT EVERY STAGE

It is essential that our members feel supported at every stage of their career; from being encouraged to specialise in the discipline through our Undergraduate Essay Prize, to specialist training courses for those established in the field, such as our Endocrine Nurse Update and Clinical Update training programmes.

When members feel their training needs are not quite being met, we make every effort to address this. This year, our Young Endocrinologists' Steering Group worked closely with the Science Committee to expand the Career Development Workshops to a dual-track programme. The Career Development Workshops are informal forums for early career researchers to discuss and present their work and learn from more senior colleagues. The new format caters for both PhD and postdoctoral researchers including those who are more experienced and aiming to apply for fellowships or grant funding.



CAREER DEVELOPMENT WORKSHOPS

"The workshop was a fantastic and invaluable, one-of-a-kind learning experience"



"Overwhelming, mindblowing! (In a great way)"

CAREER DEVELOPMENT WORKSHOPS DELEGATES

WORKING TOGETHER



This year, our Young Endocrinologists' Steering Group has strengthened links with the Young Diabetologists and Endocrinologists' Forum with the aim of jointly organising education events for clinical specialists in endocrinology and diabetes.



ENDOCRINE NURSE UPDATE

HARNESSING OUR EXPERT BASE TO ADVANCE ENDOCRINOLOGY

Advancing endocrinology in a clinical setting relies on broad, rigorous studies of patient cases and treatment practices. The unique strength of the Society's UK-wide research and audit projects lies in its network of contributing members based in regional centres, as well as support from external organisations. This year we have made huge progress in five projects.

The post-radioiodine management of patients with Graves' disease (PRAGMA) project is now fully operational and has approximately 150 patients on the database. The aim of the study is to inform future treatment of patients with Graves' disease.

The Apoplexy Audit project is an audit of practice and outcome, with the aim of understanding how clinical practice currently fits with recommendations set out in the Society for Endocrinology UK guidance for the management of pituitary apoplexy.

Next year our project to assess transitional care in endocrinology across the UK is set to go live.

The Society also administers a voluntary interdepartmental peer review scheme for UK endocrine units, providing an external assessment of clinical governance, standards of endocrine care and service provision.

WORKING TOGETHER



The Society works with Ipsen and the Clinical Endocrinology Trust to continue the long-running UK Acromegaly Register project. By July 2013 over 3,000 patients were on the Register. This year we have strengthened our collaborations with research staff and encouraged centres to undergo database training and to allow continuous updating. Next year a regular report will be produced to provide project updates to those involved.

"The peer review was a fantastic chance to reflect on practice and highlight to the Trust the potential threats to the service and the importance of the department. It affirmed the excellent teamwork in the department and a real pride in our achievements. The reviewers encouraged us to develop new services, all of which are being pursued, and has provided a great sense of purpose."

ENDOCRINE UNIT, EXETER

Our long running project on congenital adrenal hyperplasia (CaHASE project) continues to have an international impact. A fourth scientific paper was published and project findings presented at the Society BES conference 2013, ECE 2013 and at ENDO 2013 in the US.

We highlighted progress of the CaHASE project to the press which received news coverage in several specialist medical publications including *Medpage Today* and *Healio Endocrine Today*.

“The best BES ever! Extremely high quality content this year with a good balance between basic and clinical science”
SOCIETY BES CONFERENCE 2013 DELEGATE

BRINGING OUR COMMUNITY TOGETHER

Sharing information and experiences, and making contacts within our global community of endocrinologists is one of the things our members say they gain most from the Society. Our events and training programme aims to provide not only career-enhancing material, but to give opportunities for members to come together, build contacts and foster new and existing collaborations.

SOCIETY EVENTS 2012-13

- Society for Endocrinology BES conference (Harrogate)
- Endocrine Nurse Update (Stratford-upon-Avon)
- Career Development Workshops (Steventon)
- Clinical Update (Stratford-upon-Avon)
- National Clinical Cases (London)
- Regional Clinical Cases (Leeds and Newport)

Full details of Society events are available on our website at www.endocrinology.org/meetings/

OUR EVENTS ATTRACTED A COMBINED TOTAL OF 1,433 DELEGATES

Our flagship event is the annual Society for Endocrinology BES conference. This year we worked hard to extend and maximise the networking and collaboration opportunities available.

- More sessions had a focus on translational research, strengthening links between basic scientists and clinicians
- A skills workshop was introduced; ‘How to get published’ gave members chance to talk to Editors from the Society’s official journals
- The Society presence was stronger this year, providing focal points for members to exchange ideas, feedback to Society office staff and discuss future direction
- Our programme was extended, providing further discussion opportunities, thanks to additional satellite sessions sponsored by our Corporate Supporters

CHAMPIONING DIVERSITY

Our membership spans all areas of endocrinology including many niche topics. During 2012-13, the Society’s Special Interest Groups (SIGs) gave given many members the opportunity to join forces to raise the profile and give a voice to their specialist areas of interest.

SIGs promoted and shared best practice with colleagues within their own respective field of expertise and were involved in writing guidelines, patient information sheets and collaborating with other key stakeholders. In 2013-14 SIGs will be relaunched as Endocrine Networks and will be actively encouraged to apply for the Society’s Sponsored Seminar grants.

“Endocrine Networks will provide forums to allow our members to share ideas and best practice and will promote interdisciplinary interests within the Society”
LEON HEWARD-MILLS, CHIEF EXECUTIVE, SOCIETY FOR ENDOCRINOLOGY

KEEPING EACH OTHER INFORMED

In between our regular events, it’s important our members can communicate with each other. One of our primary channels for keeping in touch is through our quarterly magazine *The Endocrinologist*. This year, the Editorial Board has developed the publication to give our members more of what they asked for, including:



- New user-friendly design and layout, lengthened to 32 pages
- Expanded Hot Topics section, including reports on articles from around the endocrine world
- Opinion sections, including comment and thought from our Chief Executive and Science and Clinical Committees and prominent members on the contentious issues in endocrinology today
- Active commissioning programme to encourage contributions from high profile members as well as to highlight the achievements of early career members
- Regular feature length interview with eminent endocrinologists



We also encourage our members to keep in touch through the members’ area of our website, including digital forums for Committees and Endocrine Networks, and through social media.

“The press office arranged an interview with a leading expert, and helped me meet a tight deadline. Their work is vital in providing accurate, independent health information to the public.”
COLLEEN SHANNON, FREELANCE HEALTH JOURNALIST

REACHING WIDER AUDIENCES

Our aim is for everybody to have a better understanding of hormones and to make informed decisions about their health as a result. To achieve this aim we increasingly engage with the public, patients, teachers and policy-makers to broaden recognition of endocrinology, discuss the latest advances, and emphasise the relevance of endocrinology to our everyday lives.

This year our members were quoted in publications including *The Telegraph*, *Daily Mail* and *The Times*. We also worked closely with the Science Media Centre to provide editorial advice on endocrinology stories before they hit the headlines.

Journalists and other members of public continue to use our public information website You and Your Hormones (www.yourhormones.info) for accurate facts about endocrinology and endocrine conditions. This year, the website received almost 870,000 visits, compared to almost 130,000 visits over the same period last year.

We will continue to work closely with the media next year as we expand our programme of public engagement activities.

“It’s great to have this level of detail - we are definitely on the right track with our scene explaining what hormones are and how they work”

TV DOCUMENTARY PRODUCER



MEDIA: A YEAR IN NUMBERS

45

RESPONSES TO MEDIA ENQUIRIES

100

PRESS ARTICLES ON RESEARCH PRESENTED AT THE SOCIETY BES CONFERENCE

PRESS COVERAGE IN

23

COUNTRIES

WORKING TOGETHER



This year more members than ever took part in Voice of Young Science media workshops run by Sense About Science. These workshops provide invaluable training for our early career members, introducing them to how the media works and giving practical tips from journalists and advice from media-experienced scientists.

INCREASING ENGAGEMENT THROUGH DEBATE AND DISCUSSION

Broadening recognition and appreciation of the value of endocrinology is about much more than just providing the facts - it’s about putting science in the public arena to be discussed and debated.

This year our members worked creatively to deliver inspiring events for three major UK science festivals: Cheltenham Science Festival, Brighton Science Festival and Edinburgh International Science Festival. Collectively, we managed to reach a total audience of almost 700 people, discussing issues from obesity to menopausal HRT, as well as hosting Hormone Fight Club at which we asked the audience to make up their mind about which was the most important hormone based on pitches from our championing speakers.



“It was useful to put all the information together, particularly in a way relevant to the more general population as opposed to ladies with other significant endocrine and medical issues. It was also helpful to get feedback from a ‘lay’ audience and to better understand their concerns and issues.”

HELEN BUCKER, SPEAKER AT THE SOCIETY’S HRT EVENT AT CHELTENHAM SCIENCE FESTIVAL



CASE STUDY

VOICE OF THE FUTURE



This year the Society took part in Voice of the Future, organised by the Society of Biology to debate the future of science in the House of Commons. Four of the Society’s Young Endocrinologist members attended including Muhammad Khan, a 4th year medical student at the University of Liverpool.

“Part of National Science and Engineering Week 2013, the ‘Voice of the Future’ event provided a platform for young scientists, at various stages of their careers, to press renowned figures on matters concerning the scientific community at large. Within the walls of Portcullis House, London, these young scientists who, in years to come, will be at the forefront of their own respective fields, questioned the Government Chief Scientific Adviser, Sir John Beddington, the Minister for Universities and Science, Rt Hon David Willetts MP, and Shadow Minister for Higher Education and Science, Shabana Mahmood MP on topical issues. Ranging from women in science to stem cells, no stone was left unturned when it came to testing the speakers on matters central to scientific disciplines. As the session drew to its end, it was clear the event would have a lasting effect. It had been an opportunity to gain an appreciation of how Parliament and Government determine various scientific policies, and to realise that such decisions are no easy task. It is not simply a matter of blindly pursuing the ‘hottest’ new trends in science but of ensuring that the policies implemented are acceptable to the community at large, by scientists and non-scientists alike.”

WORKING TOGETHER



We also worked with the Society of Biology to take part in Parliamentary Links Day. This event is organised on behalf of the science and engineering community to strengthen dialogue with Parliament. This gave us the opportunity to highlight the central role of endocrinology in many health issues and the work of endocrinologists that will help tackle these.



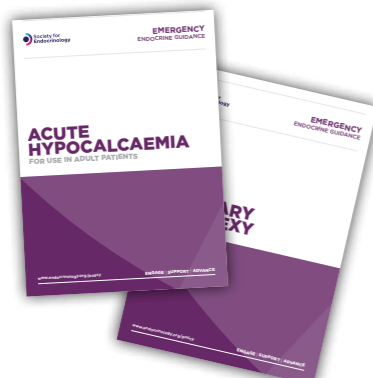
WE SUPPORT
OUR MEMBERS
AT EVERY STAGE
OF THEIR CAREER
THROUGH
GRANTS, TRAINING,
LEARNING
RESOURCES AND
NETWORKING
OPPORTUNITIES

SHARING OUR EXPERIENCES TO IMPROVE PATIENT CARE

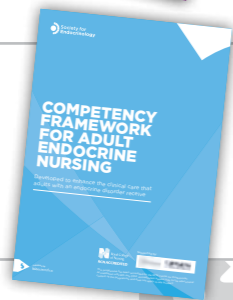
Enabling healthcare professionals to provide the best possible patient care is a priority for the Society. Our members are world-leading scientists, clinicians and nurses at the forefront of research and practice. Working together, they develop Society guidance to advise on diagnosis and management of patients with endocrine disorders.

KEY ACHIEVEMENTS IN 2012-13 INCLUDED:

- Emergency Endocrine Guidance documents were published to provide guidance during initial assessment and management of acute hyper- and hypocalcaemia and pituitary apoplexy.



- A Competency Framework for Adult Endocrine Nursing was developed, launched and accredited by the Royal College of Nursing.



- Draft Guidance on the Late Endocrine Effects of Cancer Treatment has been developed and will be launched 2013-14.



- We built on the success of our Clinical Update and Endocrine Nurse Update.



THE SOCIETY IS PLEASED TO BE ABLE TO PROMOTE THE WORK OF THE FOLLOWING PATIENT SUPPORT GROUPS

Addison's Disease Self Help Group	The Gender Trust
ALD Life	Hypoparathyroidism UK
Androgen Insensitivity Syndrome Support Group	Kallmann Syndrome Organisation
Anorchidism Support Group	Klinefelter's Syndrome Association UK
Association for Multiple Endocrine Neoplasia Disorders	National Association for Premenstrual Syndrome
British Thyroid Foundation	NET Patient Foundation
Butterfly Thyroid Cancer Trust	Paget's Association
Child Growth Foundation	The Pituitary Foundation
Congenital Adrenal Hyperplasia Support Group	Prader-Willi Syndrome Association UK
<i>d sdfamilies</i>	Sexual Advice Association
FIPA Patients	Thyroid Eye Disease Charitable Trust
	Turner Syndrome Support Society
	Verity



CLINICAL UPDATE

STRENGTHENING PATIENT SUPPORT

As well as educating scientists and clinicians, we take an active interest in the welfare of patients with endocrine conditions and ensure that those who support them have access to good training and information. To achieve this, the Society makes grants available to fund specific patient group activities in addition to telephone helpline training for their staff.

One of the Society's long-term objectives is to facilitate communication between the medical community and endocrine patient support groups. We do this by putting patient groups in touch with scientists, clinicians and nurses who work with the patients they represent. During 2013-14, the Society will provide grants to allow groups to exhibit at Society events to promote their work and network with delegates and each other.



PATIENT SUPPORT GROUPS



CASE STUDY

“The ADSHG’s trustees are grateful to the Society for Endocrinology, for its role in coordinating contacts across all the patient support groups affiliated to the Society, and for its support in our awareness-raising work. Staff at the Society have been quietly supportive in featuring our work in various publications, and in facilitating our participation at Society events. Over recent years, the Society has increasingly opened its doors to us, and in 2013 the Addison’s group was the beneficiary of display space at four events: Clinical Cases, the Society BES conference Endocrine Nurse Update and Clinical Update. At the Society BES conference, the ADSHG also participated in several productive ‘fringe’ events, including the annual support group meeting convened by the Society, and a lunchtime discussion with the Clinical Committee about emergency medical response for adrenal crisis. The Society’s magazine, The Endocrinologist, regularly manages to squeeze in a mention for us too!”

KATHERINE WHITE, ADSHG CHAIR AND CLINICAL ADVISORY PANEL COORDINATOR



“The intense scientific environment opened my mind to different ways in which I can advance my project and allow the growth of my research”

SUSAN JALICY (DUNDEE), PRACTICAL SKILLS GRANT RECIPIENT

SUPPORTING SUCCESS

MOST OF THE SOCIETY'S FUNDS ARE USED TO SUPPORT OUR MEMBERS AND THE WORK THAT THEY DO.

TO HELP OUR MEMBERS ENGAGE:

from attending media training workshops to developing public engagement projects

TO SUPPORT OUR MEMBERS' CAREERS:

from attending scientific conferences to visiting other labs and clinics

TO ADVANCE OUR MEMBERS' RESEARCH:

from undergraduate summer placements, to early career project support

We also implemented guidelines for marking of Early Career grants and undergraduate essays, to improve consistency and maintain high standards. Next year we will develop and implement forms for recipients to report back on the outcomes of Society grants and awards.

GRANTS: A YEAR IN NUMBERS

12%

MORE APPLICATIONS RECEIVED

£536K

GIVEN OUT IN GRANTS

357

GRANTS AWARDED

CASE STUDY

“As a Young Endocrinologist, I am keen to make my training successful, in order to achieve my career aspirations, and one area I am particularly focused on is the application for funding. Over the past three years I have been awarded a number of grants from the Society, including Summer Studentships, Conference and Early Career grants, which have been an integral part of my training, allowing me to develop my grant writing, teaching and supervision skills. In addition, the Society has funded travel grants enabling me to attend conferences such as the Society BES conference and ENDO, giving me the opportunity to enhance my presentation and networking abilities. Furthermore, attending the Career Development Workshops in combination with my Early Career grant has been a huge support, giving me the knowledge and freedom to develop and run my own project, which will be used as pilot data for future fellowship applications.”

DR SAM MIRCZUK

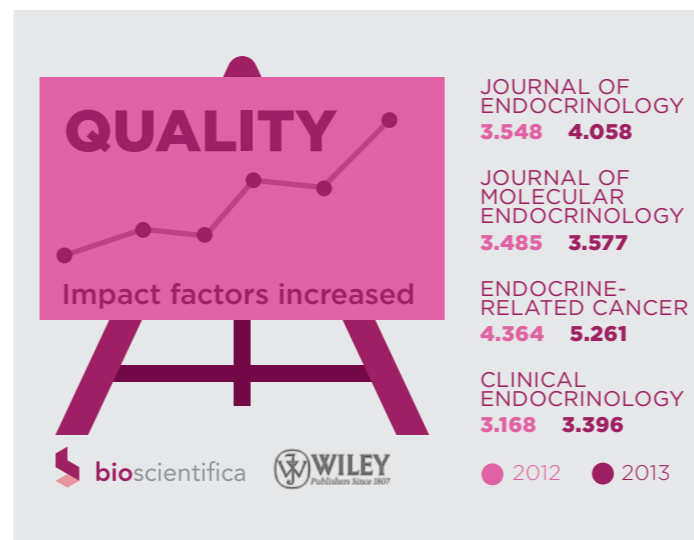
POSTDOCTORAL RESEARCHER, ROYAL VETERINARY COLLEGE, LONDON AND CHAIR OF THE YOUNG ENDOCRINOLOGISTS STEERING GROUP



Full details of Society grants are available online at www.endocrinology.org/grants

BUILDING ON STRONG FOUNDATIONS

The Society advances endocrinology by publishing cutting-edge research in the discipline. To do this, we work with two publishing partners: Wiley and the Society's commercial subsidiary, Bioscientifica.



Many of our members are part of the Editorial Boards that govern our journals. This year, we have seen an increase in impact factors across the four established journals.



The Society came together with 12 other international societies this year to endorse a brand new publication *Endocrinology, Diabetes & Metabolism Case Reports* (published by Bioscientifica). This is a unique, open access resource that publishes and links together case reports, enabling practitioners to communicate findings, share knowledge and convey medical experiences efficiently and effectively; furthering both medical education and clinical practice.

“The peer-review process and quality of feedback for our article were excellent, and the template is superb. The website works well, and I fully intend to submit future interesting case reports to EDM Case Reports.”
EDM CASE REPORTS AUTHOR

One of our newer publications, *Endocrine Connections*, was indexed in PubMed and PubMed Central – a significant step in increasing the discoverability of authors' work.

IMAGES IN ENDOCRINOLOGY

This year we also redesigned three of our journals, *Journal of Endocrinology*, *Journal of Molecular Endocrinology* and *Endocrine-Related Cancer*. They feature a complementary cover design, identifying them as a family of Society journals. We also launched a cover art competition to feature some of the fascinating images from our readers.



Details of Society journals can be found online at www.endocrinology.org/journals

RECOGNISING AND REWARDING EXCELLENCE

Many of our members are world-leading endocrinologists in their field. Others are at earlier stages of their career, but are making huge contributions to endocrinology and are an inspiration to others. We recognise and reward excellence in endocrinology with Society Medals, Prizes and Awards. Next year we will add annual Journal Awards to our portfolio.

2013 MEDALLISTS



DALE MEDAL

Ronald Evans 'Nuclear receptors and AMPK: can exercise mimetics cure diabetes?'

Dr Ronald M. Evans, a professor at the Salk Institute's Gene Expression Laboratory, is a prominent endocrinologist who discovered the receptors that respond to various nuclear hormones. These hormones control sugar, salt, calcium and fat metabolism; thus, they are primary targets in the treatment of breast cancer, prostate cancer and leukaemia, as well as osteoporosis and asthma. Dr Evans' work has been recognised by multiple awards including the Albert Lasker Award for Basic Medical Research in 2004.



TRANSATLANTIC MEDAL

Michael Meaney 'Environmental regulation of neuroendocrine systems through epigenetic mechanisms'

Dr Michael Meaney was one of the first researchers to identify the importance of maternal care in modifying the expression of genes that regulate behavioural and neuroendocrine responses to stress. Based at the Douglas Institute in Montreal, Canada, Dr Meaney has authored over 180 publications and presented at research institutes and scientific meetings worldwide.



SOCIETY FOR ENDOCRINOLOGY MEDAL

Márta Korbonits 'Genes and giants'

Professor Márta Korbonits is a clinical academic endocrinologist with a special interest in pituitary tumorigenesis as well as metabolic effects of hormones. Based at St Bartholomew's Hospital since 1991, she has published more than 150 studies as well as having written and edited numerous books in the field of endocrinology. She shares her time between clinical patient care, clinical research and laboratory-based research as well as teaching at undergraduate and postgraduate level.



HOFFENBERG INTERNATIONAL MEDAL

Fernand Labrie 'Multiple applications of intracrinology in clinical medicine'

Dr Fernand Labrie has made major contributions to clinical endocrinology, including developing the standard hormonal therapy of prostate cancer worldwide. During his postdoctoral studies in Cambridge, Dr Labrie isolated the first mammalian messenger RNA molecule, after which he returned to Canada and founded the Laboratory of Molecular Endocrinology, one of the largest endocrine research groups in the world. With his work described in more than 1,275 publications, Dr Labrie is Canada's most cited scientist.



EUROPEAN MEDAL

Anna Spada 'cAMP in the pituitary: an old messenger for multiple signals'

Professor Anna Spada, based at the University of Milan's School of Medicine, is an international authority on hormones. Her research interests include pituitary tumour pathogenesis, molecular mechanisms of resistance to hormone action and pharmacogenomics. Professor Spada has a global reach; she has published 133 studies in peer-reviewed journals, and chaired 98 national and 42 international meetings.

CASE STUDIES

YOUNG ENDOCRINOLOGISTS' PRIZE LECTURES



CLINICAL PRIZE WINNER:

Gerard Walls,
University of Oxford

LECTURE:

'Clinical and pre-clinical studies of neuroendocrine tumours (NETs) in multiple endocrine neoplasia type 1 (MEN1) and evaluation of MEN1 gene replacement therapy for MEN1-associated NETs'

"I am delighted to have been given the honour of presenting the Young Endocrinologist Clinical Prize Lecture in 2013. As a trainee surgeon, the Society's generous award has encouraged me to continue as a clinical lecturer in General Surgery, and to pursue my interests in endocrine tumorigenesis and novel therapies for NETs. This prestigious award will strengthen my applications for future funding in order to establish an independent career in our increasingly competitive environment. I feel privileged to have the support of a society that places such a high value on nurturing the next generation who may continue the advancement of patient care."



BASIC SCIENCE PRIZE WINNER:

Carles Gaston-Massuet,
University of London

LECTURE:

'Pituitary development and disease: The answer is blowing in the Wnt'

"It was a great honour to give the Young Endocrinologist Basic Science Prize Lecture at the Society BES conference 2013 in Harrogate. This prize by the Society represents an important recognition of my research by a prestigious internationally renowned society. This prize comes at the perfect time in my career when I am establishing myself as an independent scientist at the Centre for Endocrinology at the William Harvey Research Institute. Presenting my data as a plenary lecture meant exposure to a large scientific audience which provided me with valuable scientific feedback and career advice from high calibre scientists."

UNDERGRADUATE ESSAY PRIZE:

Lucy Simmonds, University of Nottingham

JOURNAL OF ENDOCRINOLOGY/JOURNAL OF MOLECULAR ENDOCRINOLOGY PRIZE:

Vicki Smith, University of Birmingham

UNDERGRADUATE ACHIEVEMENT AWARDS*:

Ruth Andrew, University of Edinburgh, Queen's Medical Research Institute

Rachel Crowley, University of Birmingham, Centre for Endocrinology, Diabetes and Metabolism

Maralyn Druce, Barts Health NHS Trust/Barts and the London School of Medicine, Department of Endocrinology

Rob Fowkes, Royal Veterinary College, Comparative Biomedical Sciences

Frank Joseph, Countess of Chester Hospital, Department of Diabetes and Endocrinology

Catriona Kelly, Keele University, Medical School

Peter King, Barts and the London School of Medicine and Dentistry, Department of Endocrinology

Kevin Murphy, Imperial College London, Section of Investigative Medicine, Division of Diabetes, Endocrinology and Metabolism

Nigel Page, Kingston University London, School of Life Sciences

Deborah Wake, University of Dundee, Department of Diabetes and Cardiovascular Medicine

Timothy Wells, Cardiff University, School of Biosciences

PRIZE AND AWARD WINNERS 2012-13



WE ADVANCE
SCIENTIFIC
AND CLINICAL
ENDOCRINE
EDUCATION
AND
RESEARCH
TO IMPROVE
HEALTH AND
KNOWLEDGE

ADVANCE

AUGUST '12

Work started on establishing a new brand for the Society and Bioscientifica

bioscientifica



OCTOBER '12

First changes made to the Career Development Workshops



DECEMBER '12

Final work on the Competency Framework for Adult Endocrine Nursing



JANUARY '13

Journal of Endocrinology and Journal of Molecular Endocrinology relaunched with refined scopes.

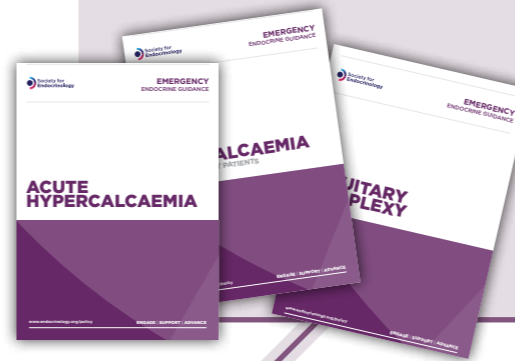
Journal of Endocrinology, Journal of Molecular Endocrinology, and Endocrine-Related Cancer redesigned



FEBRUARY '13

Career Development Workshops revamped

First three Emergency Endocrine Guidance documents launched



MARCH '13

Endocrinology, Diabetes & Metabolism Case Reports opens for submissions

Initial launch of a Competency Framework for Adult Endocrine Nursing at the Society BES conference

Best SfE BES ever!

SOCIETY FOR ENDOCRINOLOGY BES 2013



APRIL '13

Data collated and analysed from member feedback surveys, focus groups and interviews



JUNE '13

Increases in impact factors announced across four Society journals

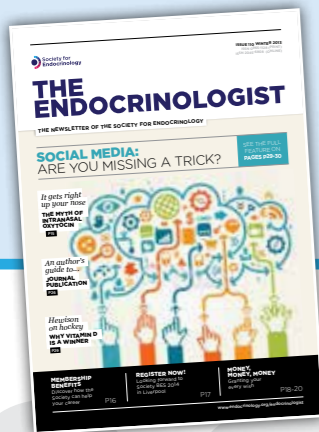
Raised the profile of endocrinology at Parliamentary Links Day

Endocrine Connections indexed in PubMed and PubMed Central



SEPTEMBER '12

Introduction of Science Committee correspondent to our magazine The Endocrinologist, leading to regular Science and Clinical Committee opinion columns



NOVEMBER '12

Highest number of abstracts received for the Society BES conference in recent years



JULY '13

Discussion of new collaborations with Young Diabetologists and Endocrinologists' Forum

Royal College of Nursing accreditation of Competency Framework for Adult Endocrine Nursing

Launch of full Endocrinology, Diabetes & Metabolism Case Reports website with published content



TIMELINE OF ACHIEVEMENT 2012-13





The Society for Endocrinology is a charity, funded by a variety of income streams. The largest of these is from our commercial subsidiary, Bioscientifica. The Society and Bioscientifica have a shared purpose to 'improve knowledge, health and life'.

Bioscientifica exists to support the advancement of medicine and the biological sciences. By Gift Aiding all its profits back into the Society for Endocrinology, Bioscientifica enables greater collaboration between organisations and supports the drive for better public health.

During 2012-13, Bioscientifica Gift Aided £915K of its profits back to the Society. Since 1996 Bioscientifica has Gift Aided £6.345 million to the Society.

PROFIT for GOOD

DURING 2012-13 BIOSCIENTIFICA HAS:

- Won a new client, the European Calcified Tissue Society
- Won the Best Association Conference award at the Conference Awards 2013
- Launched two brand new publications: *Endocrinology, Diabetes & Metabolism Case Reports* and *Bone Abstracts*



BIOSCIENTIFICA HAS TWO DIVISIONS

PUBLISHING: innovative and agile, Bioscientifica Publishing collaborates with learned societies worldwide to develop new and existing quality products that meet the ever-changing needs of the biomedical community.

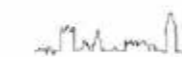
CLIENT SERVICES: providing a range of high-quality business support and management services tailored to the exact requirements of its clients. The award-winning range of services includes association management, membership development, event management, publishing, marketing and communications, website management and strategic planning.

"We have enjoyed working with the Society for Endocrinology for several years now and they are our 'go-to' organisation for finding experts to respond to misconceptions and scare stories about endocrine disrupters in the news."

VICTORIA MURPHY, SENSE ABOUT SCIENCE

WORKING TOGETHER

Collaboration with external partners is a strategic priority for the Society for Endocrinology in order to strengthen and expand the reach of our work towards improving public health. Here are some of the organisations we worked with during 2012-13.



CORPORATE SUPPORTERS 2012-13



WORKING TOGETHER TO ADVANCE ENDOCRINOLOGY

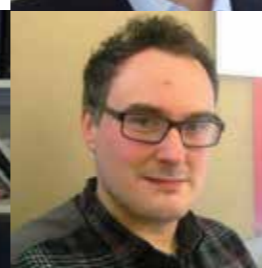
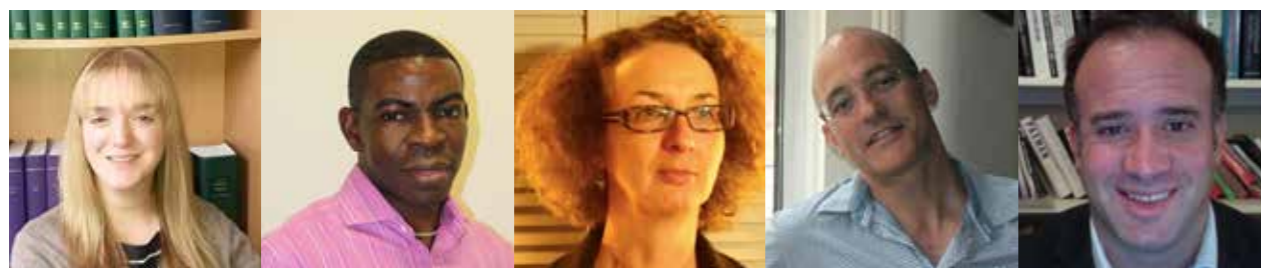
The Society is run largely by members - scientists, clinicians and nurses who volunteer their time and expertise to carry out and continually develop Society activities. They ensure we move towards our ambition of becoming a world-leading authority on hormones with our members' best interests at heart.

WE THANK:






100 Committee members, 110 Editorial Board members and many who develop event and training programmes, act as speakers and chairs, review grant applications and journal articles, act as media spokespeople, help run public events and represent the Society in other capacities. Some of these people are shown on this page.

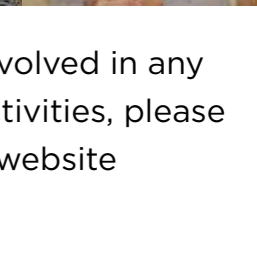
We are immensely grateful to all these volunteers through whom the Society exists.



JOIN US!

We are regularly looking for new members to contribute towards Society activities. As well as helping the Society move forwards, our members also benefit individually from the experience.

-  GAIN RECOGNITION FOR YOUR WORK
-  RAISE YOUR PROFILE
-  ADVANCE YOUR CAREER DEVELOPMENT



If you would like to get involved in any aspect of the Society's activities, please get in touch through our website www.endocrinology.org

MESSAGE FROM THE TREASURER

The Society continues to pursue its financial strategy to reduce surplus reserves by setting deficit budgets, while remaining aware of prevailing economic conditions. The strategy incorporates substantial grant support for member, patient group and public activities; subsidising conferences and educational events and investing in the strategic development of the Society for the future. The refurbishment of the Bristol offices has enhanced the facilities and enables the reduction of ongoing premises costs. Whilst the commitment to these activities remains high, any impact on the Society's finances has been diluted by strong performance from the investment portfolio and a healthy gift aid contribution from Bioscientifica. As a result the finances of the Society remain strong, despite the continuing uncertainties in the economy.



FINANCIAL HEADLINES

- Gift Aid from the trading subsidiary, Bioscientifica, is significant in supporting current and future member and public activities. Journal publishing remains a significant element of Bioscientifica's activities and the continuing threat to this rapidly changing environment highlights the need to secure future funding. Council recognises the importance of the Gift Aid contribution and the need to invest in the continued development of Bioscientifica's business to underpin the continuing growth and development of Society activities.
- Grants awarded by the Society during the year incorporated £119K of Early Career grants deferred from last year and represent 74% of the Gift Aid from Bioscientifica.
- Movements in the value of the investment portfolio can lead to gains or losses for the Society. During the year significant gains were recorded, but the nature of investments means these gains may be transient.

2012/13 - A YEAR IN NUMBERS

£655K
GRANTS AWARDED

£351K
DEFICIT BEFORE INVESTMENT GAINS

£915K
GIFT AID FROM BIOSCIENTIFICA

£652K
INVESTMENT GAINS

£301K
OVERALL SURPLUS

INVESTMENT POLICY

In accordance with the Company's Articles of Association, management of the Company's investments is delegated to an authorised investment manager. During the year, a review of the investment managers led to the portfolio being transferred to Brewin Dolphin Limited. On appointment, Brewin Dolphin supported the Trustees through a detailed review of the investment policy to ensure clarity of the aims and risk profile of the Society.

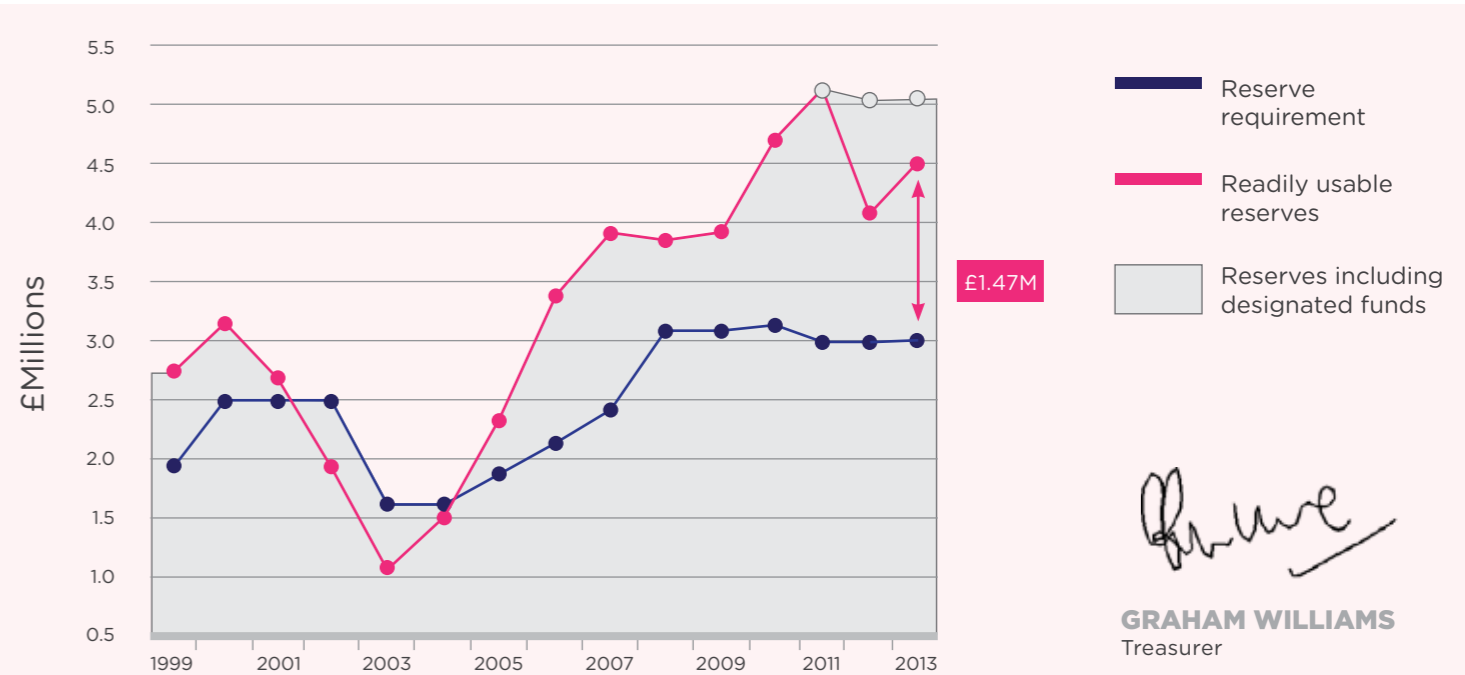
RESERVES POLICY

The Society maintains a reserve intended to provide support in case of economic downturn in order to maintain the Society as a going concern for a minimum of two years. This is particularly important with regard to the dependency on publications as a source of income through Bioscientifica. The rationale underpinning the reserves policy was reviewed at the conclusion of the financial year and the level of the reserve requirement remains at £3.02M. A full review of the reserves policy is currently in hand to ensure it remains appropriate in the light of developing activities.

READILY USABLE RESERVES

The blue line in the graph below shows the level of the reserves requirement, as set by the Trustees. The Trustees should make plans to utilise funds in excess of this level. The actual level of usable reserves is shown as the pink line. The gap between the two represents the surplus reserves and stood at £1.07M at 31 July 2012. However, the investment gains of £651K during the year resulted in an increase of surplus reserves to £1.47M at the year end. The shaded area represents the total reserves under the control of the Trustees, after adding back the funds designated for strategic development activities. The Trustees continue to monitor activities with a view to investing further in the development of the Society.

At July 2013, the required level of usable reserves was set at **£3.02M** and the actual level of readily usable reserves was **£4.50M**



Graham Williams
GRAHAM WILLIAMS
Treasurer

A full copy of the Trustees' report and accounts is available on the website at www.endocrinology.org/about/annual.html



Society for Endocrinology
22 Apex Court
Woodlands | Bradley Stoke
Bristol | BS32 4JT | UK

☎ General: +44 (0)1454 642200
☎ Fax: +44 (0)1454 642205
@ info@endocrinology.org
🖥 Visit us at www.endocrinology.org

Company Limited by Guarantee.
Registered in England No. 349408.
Registered office as above.
Registered Charity No 266813